

CLASSICS FROM INNOVATION

Note: Product pictures are for reference only. The actual product shall prevail. If the product name, specification, and design are changed, please refer to the product registration information.

The final interpretation right belongs to Xuzhou AKX Electronic Technology Co., Ltd.



Endoscopy devices



Xuzhou AKX Electronic Science and Technology Co.,Ltd



Company Profile

Xuzhou AKX Electronic Science and Technology Co.,Ltd is a high-tech enterprise that committed to research, production, sale and service of medical imaging systems. Since the establishment, it has made all efforts with unflinching courage, developed a quality policy of “Customer Demand Centered, Production Management Based, Independent Innovation for Development, Continuous Improvement“ in Quality System and established advanced quality assurance system. Besides, it has been implementing ISO13485 Quality Management System, ERP Management System , CE certificates and FDA Registration.

After 14 years experience of development, our company has already become to a leading manufacturer specializing in electronic digital colposcopes and endoscope camera at home and abroad. Our company is always striving to provide better products and pursuing technological advances in the industry, Meanwhile Our company has continued to enhance and improve the design, specifications and functionality of our products to maintain leading competitor in the market. The company’s products have been distributed in many countries abroad and Provide OEM services for many international well-known brands in this industry, It is worth mentioning that IKEDA brand products have been unanimously praised by customers at home and abroad.

USA FDA Registration (NO. 3009877781)

European Community Medical Device CE Certification

EN ISO 13485 .2016 quality management system certification



IPX level 8

Waterproof camera head



Universal C-mount coupler to meet the adaptation needs of rigid/flexible endoscopes (compatible with different brand endoscopes, such as laparoscope, resectoscope, cystoscope, hysteroscope, sinusoscope, arthroscopy Etc., and fiber flexible endoscopes).

4 Function buttons

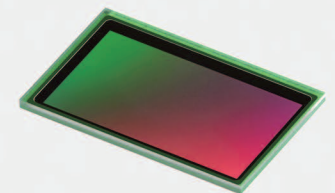


- Photo capture
- Auto White balance
- Zoom in / Zoom out



Built-in CMOS full HD camera image sensor

- All metal design texture
- IPX8 waterproof camera
- Full HD optical coupler C-mount standard



YKD-9100

FULL HD Endoscope System



FEATURES

- Built-in 19-inch high-definition monitor, showing more organizational details, to ensure the safety of surgery;
- Built-in high-definition imaging workstation, examination/surgery mode, one-key switching;
- The integrated design of LED cold light source and camera saves space and is convenient to carry;
- Built-in USB full high-definition image storage, Photo capture/Video recording function;
- IPX8 waterproof camera head;

Parameter configuration

| | |
|---|-----------------------------------|
| Product number | YKD-9100 |
| Camera | 1/2.8inch SONY CMOS HD Camera |
| Pixel | 2100,000 pixels |
| Image size(Horizontal×Vertical) | 1920×1080p |
| Scanning system | Progressive Scanning |
| Frame rate | (1920×1080)60p |
| SNR | ≥50dB |
| Video output | By“DVI,HDMI,CVBS”Video output |
| Horizon resolution | 1080 Lines |
| Monitor | 19 inch HD medical Monitor |
| Light source | Buit-in 80W LED cold light source |
| Built-in imaging work-station(optional) | |

YKD-9101

FULL HD Endoscope System



FEATURES

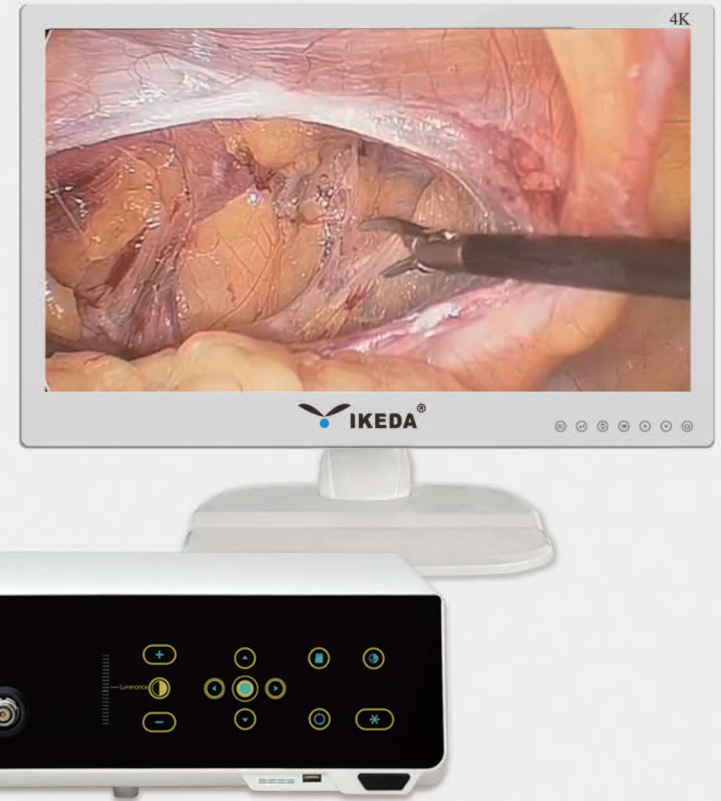
- Built-in 19-inch high-definition monitor, showing more organizational details, to ensure the safety of surgery;
- The integrated design of LED cold light source and camera saves space and is convenient to carry;
- Built-in USB full high-definition image storage, Photo capture/Video recording function;
- IPX8 waterproof camera head;

Parameter configuration

| | |
|---------------------------------|-----------------------------------|
| Product number | YKD-9101 |
| Camera | 1/2.8inch SONY CMOS HD Camera |
| Pixel | 2100,000 pixels |
| Image size(Horizontal×Vertical) | 1920×1080p |
| Scanning system | Progressive Scanning |
| Frame rate | (1920×1080)60p |
| SNR | ≥50dB |
| Video output | By“DVI,HDMI,CVBS”Video output |
| Horizon resolution | 1080 Lines |
| Monitor | 19 inch HD medical Monitor |
| Light source | Buit-in 80W LED cold light source |

YKD-9102

FULL HD Endoscope System



FEATURES

- Built-in LED cold light source;
- Built-in USB full high-definition image storage, Photo capture/Video recording function;
- The integrated design of LED cold light source and camera saves space and is convenient to carry;
- IPX8 waterproof camera head;

Parameter configuration

| | |
|---------------------------------|------------------------------------|
| Product number | YKD-9102 |
| Camera | 1/2.8 inch Sony CMOS HD camera |
| Pixel | 2100,000 pixels |
| Image size(Horizontal×Vertical) | 1920×1080p |
| Scanning system | Progressive Scanning |
| Frame rate | (1920×1080)60p |
| SNR | ≥50dB |
| Video output | By "DVI, HDMI, CVBS" video output |
| Horizon resolution | 1080 lines |
| Light source | Built-in 80W LED cold light source |
| Function | USB storage |

YKD-9103

FULL HD Endoscope System



FEATURES

- Built-in USB full high-definition image storage, Photo capture/Video recording function;
- IPX8 waterproof camera head;
- HD 1080P Video output

Parameter configuration

| | |
|---------------------------------|-----------------------------------|
| Product number | YKD-9103 |
| Camera | 1/2.8 inch Sony CMOS HD camera |
| Pixel | 2100,000 pixels |
| Image size(Horizontal×Vertical) | 1920×1080p |
| Scanning system | Progressive Scanning |
| Frame rate | (1920×1080)60p |
| SNR | ≥50dB |
| Video output | By "DVI, HDMI, CVBS" video output |
| Horizon resolution | 1080 lines |
| Function | USB storage |

YKD-9106

FULL HD Endoscope System



FEATURES

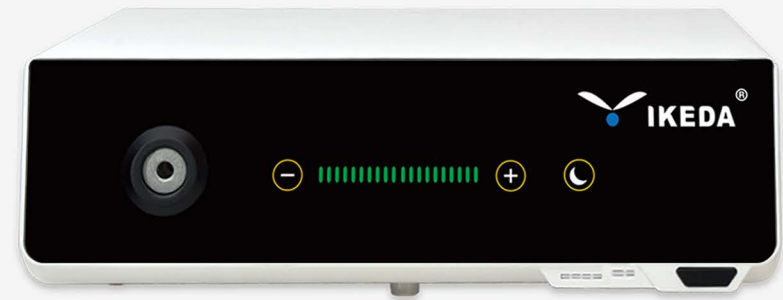
- Built-in 19-inch high-definition monitor, showing more organizational details, to ensure the safety of surgery;
- Portable all-in-one design saves space and is convenient to carry;
- Built-in USB full high-definition image storage, Photo capture/Video recording function;
- IPX8 waterproof camera head;

Parameter configuration

| | |
|---------------------------------|-------------------------------|
| Product number | YKD-9106 |
| Camera | 1/2.8inch SONY CMOS HD Camera |
| Pixel | 2100,000 pixels |
| Image size(Horizontal×Vertical) | 1920×1080p |
| Scanning system | Progressive Scanning |
| Frame rate | (1920×1080)60p |
| SNR | ≥50dB |
| Video output | By“DVI,HDMI,CVBS”Video output |
| Horizon resolution | 1080 Lines |
| Monitor | 19 inch HD medical Monitor |
| Function | USB storage |

YKD-9107

Medical LED cold light source



FEATURES

- Built-in LED cold light source, 20 levels adjustable, with memory function, service life of more than 50,000 hours;
- Touch button, easy to clean;
- One-click sleep;

Parameter configuration

| | |
|-----------------------|--|
| Product number | YKD-9107 |
| light source | 80W LED cold light source |
| Function | Light intensity indicator Sleep function |
| Color rendering index | ≥90 |
| Color temperature | 6500K |
| Luminous flux | 1500 Lm, tolerance -10% |
| Output hole size | 10mm±0.1mm |

YKD-9103 FULL HD Endoscope System+
YKD-9107 Medical LED cold light source+
YKD-2002 Medical trolley+
32 inch Medical monitor



YKD-8032



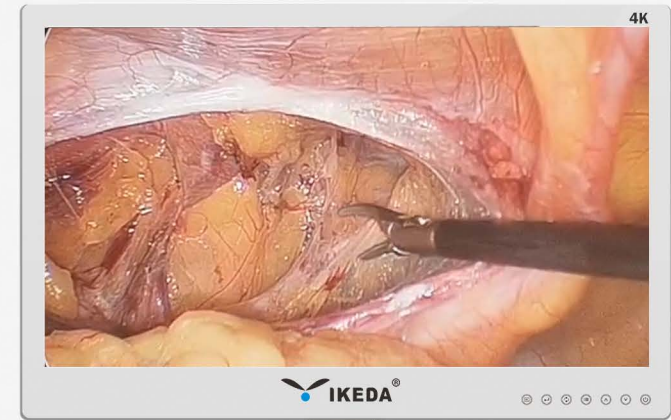
YKD-9103



YKD-9107

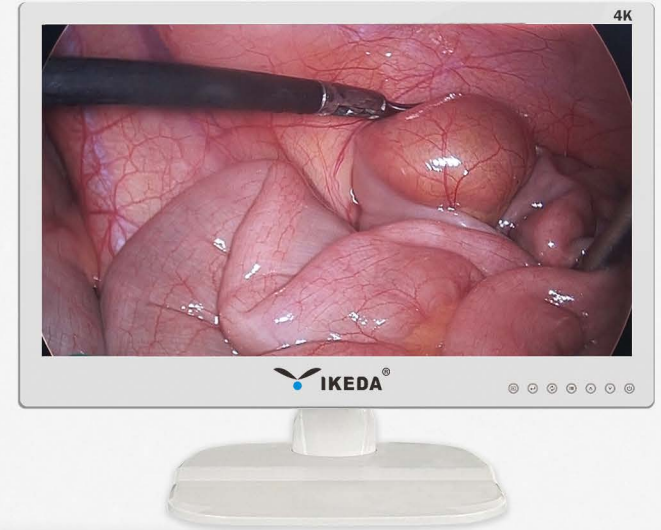


YKD-2002



YKD-9001E

FULL HD Endoscope System



FEATURES

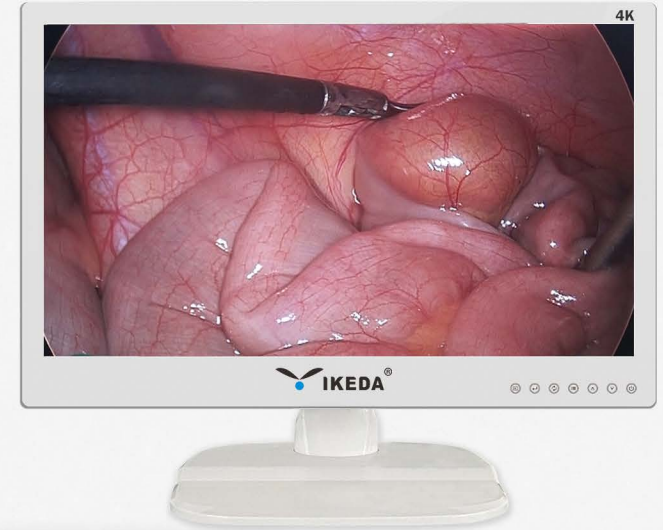
- Built-in LED cold light source;
- Built-in USB full high-definition image storage, Photo capture/Video recording function;
- The integrated design of LED cold light source and camera saves space and is convenient to carry;
- IPX8 waterproof camera head;

Parameter configuration

| | |
|---------------------------------|------------------------------------|
| Product number | YKD-9001E |
| Camera | 1/2.8 inch Sony CMOS HD camera |
| Pixel | 2100,000 pixels |
| Image size(Horizontal×Vertical) | 1920×1080p |
| Scanning system | Progressive Scanning |
| Frame rate | (1920×1080)60p |
| SNR | ≥50dB |
| Video output | By "HDMIx3, CVBS" video output |
| Horizon resolution | 1080 lines |
| Light source | Built-in 80W LED cold light source |
| Function | USB storage |

YKD-9001E-T

FULL HD Endoscope System



FEATURES

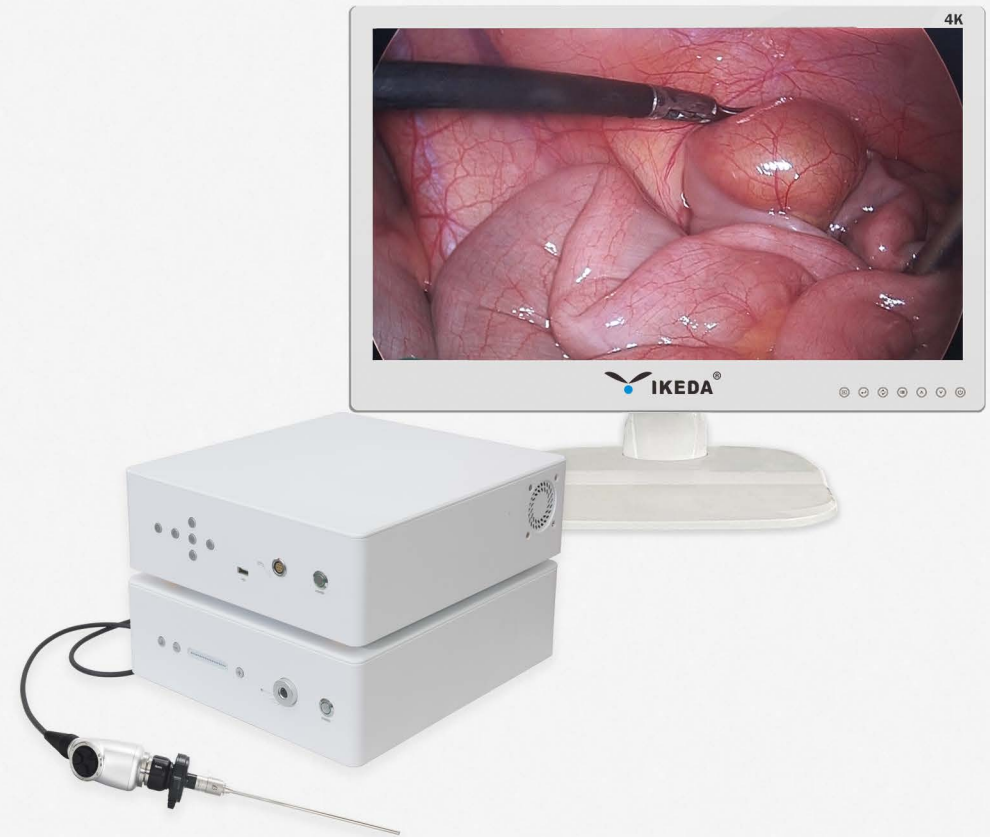
- Built-in LED cold light source;
- Built-in USB full high-definition image storage, Photo capture/Video recording function;
- The integrated design of LED cold light source and camera saves space and is convenient to carry;
- IPX8 waterproof camera head;

Parameter configuration

| | |
|---------------------------------|------------------------------------|
| Product number | YKD-9001E-T |
| Camera | 1/2.8 inch Sony CMOS HD camera |
| Pixel | 2100,000 pixels |
| Image size(Horizontal×Vertical) | 1920×1080p |
| Scanning system | Progressive Scanning |
| Frame rate | (1920×1080)60p |
| SNR | ≥50dB |
| Video output | By "HDMIx3, CVBS" video output |
| Horizon resolution | 1080 lines |
| Light source | Built-in 80W LED cold light source |
| Control | 5 inch touch screen |
| Function | USB storage |

YKD-9102E

FULL HD Endoscope System



FEATURES

- Built-in USB full high-definition image storage, Photo capture/Video recording function;
- IPX8 waterproof camera head;
- HD 1080P Video output

Parameter configuration

| | |
|---------------------------------|---------------------------------|
| Product number | YKD-9102E |
| Camera | 1/2.8 inch Sony CMOS HD camera |
| Pixel | 2100,000 pixels |
| Image size(Horizontal×Vertical) | 1920×1080p |
| Scanning system | Progressive Scanning |
| Frame rate | (1920×1080)60p |
| SNR | ≥50dB |
| Video output | By " HDMIx3, CVBS" video output |
| Horizon resolution | 1080 lines |
| Function | USB storage |

YKD-9102E-T

FULL HD Endoscope System



FEATURES

- Built-in USB full high-definition image storage, Photo capture/Video recording function;
- IPX8 waterproof camera head;
- HD 1080P Video output

Parameter configuration

| | |
|---------------------------------|--------------------------------|
| Product number | YKD-9102E-T |
| Camera | 1/2.8 inch Sony CMOS HD camera |
| Pixel | 2100,000 pixels |
| Image size(Horizontal×Vertical) | 1920×1080p |
| Scanning system | Progressive Scanning |
| Frame rate | (1920×1080)60p |
| SNR | ≥50dB |
| Video output | By "HDMIx3 CVBS" video output |
| Horizon resolution | 1080 lines |
| Control | 5 inch touch screen |
| Function | USB storage |

YKD-9103E

Medical LED cold light source



FEATURES

- Built-in LED cold light source, 20 levels adjustable, with memory function, service life of more than 50,000 hours;
- One-click sleep;

Parameter configuration

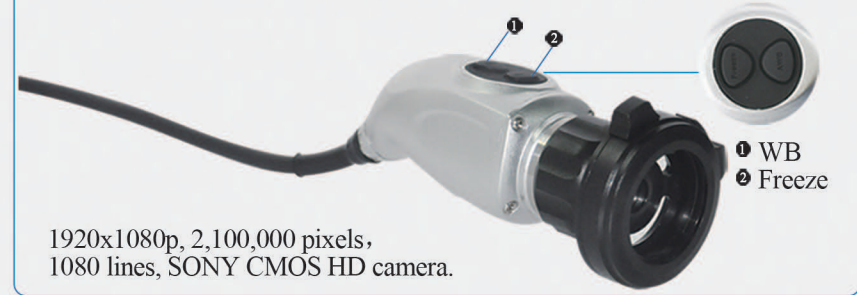
| | |
|-----------------------|--|
| Product number | YKD-9103E |
| light source | 80W LED cold light source |
| Function | Light intensity indicator Sleep function |
| Color rendering index | ≥90 |
| Color temperature | 6500K |
| Luminous flux | 1200 Lm, tolerance -10% |
| Output hole size | 10mm±0.1mm |

YKD-9006

FULL HD Endoscope System



The Camera



1920x1080p, 2,100,000 pixels,
1080 lines, SONY CMOS HD camera.

Data Connection



FEATURES

- Built-in LED cold light source;
- Built-in USB full high-definition image storage, Photo capture/Video recording function;
- The integrated design of LED cold light source and camera saves space and is convenient to carry;

Parameter configuration

| | |
|---------------------------------|------------------------------------|
| Product number | YKD-9006 |
| Camera | 1/2.8 inch Sony CMOS HD camera |
| Pixel | 2100,000 pixels |
| Image size(Horizontal×Vertical) | 1920×1080p |
| Scanning system | Progressive Scanning |
| Frame rate | (1920×1080)60p |
| SNR | ≥50dB |
| Video output | By "HDMIx3,CVBS" video output |
| Horizon resolution | 1080 lines |
| Light source | Built-in 80W LED cold light source |
| Function | USB storage |

YKD-9007

FULL HD Endoscope System



The Camera



1920x1080p, 2,100,000 pixels,
1080 lines, SONY CMOS HD camera.

Data Connection



- 1 CVBS Out
- 2 HDMI 1 Out
- 3 HDMI 2 Out
- 4 HDMI 3 Out
- 5 Power Input

FEATURES

- Built-in USB full high-definition image storage, Photo capture/Video recording function;
- SONY CMOS HD camera
- HD 1080P Video output

Parameter configuration

| | |
|---------------------------------|--------------------------------|
| Product number | YKD-9007 |
| Camera | 1/2.8 inch Sony CMOS HD camera |
| Pixel | 2100,000 pixels |
| Image size(Horizontal×Vertical) | 1920×1080p |
| Scanning system | Progressive Scanning |
| Frame rate | (1920×1080)60p |
| SNR | ≥50dB |
| Video output | By "HDMIx3,CVBS" video output |
| Horizon resolution | 1080 lines |
| Function | USB storage |

YKD-9005

Medical LED cold light source



FEATURES

- Built-in LED cold light source, 20 levels adjustable, with memory function, service life of more than 50,000 hours;
- Touch button, easy to clean;
- One-click sleep;

ACCESSORIES

- CONNECTOR TO ENDOSCOPE



Compatible with STEMA/STORZ

- CONNECTOR TO LIGHT SOURCE



Compatible with STEMA/STORZ



Compatible with WOLF/HSW



FIBER OPTIC CABLE

Parameter configuration

| | |
|-----------------------|--|
| Product number | YKD-9005 |
| light source | 80W LED cold light source |
| Function | Light intensity indicator Sleep function |
| Color rendering index | ≥90 |
| Color temperature | 6500K |
| Luminous flux | 1200 Lm, tolerance -10% |
| Control | 5 inch touch screen |
| Output hole size | 10mm±0.1mm |

YKD-9122

FULL HD Endoscope System



FEATURES

- Built-in LED cold light source;
- Built-in USB full high-definition image storage, Photo capture/Video recording function;
- The integrated design of LED cold light source and camera saves space and is convenient to carry;

The Camera



Parameter configuration

| | |
|---------------------------------|------------------------------------|
| Product number | YKD-9122 |
| Camera | 1/2.8 inch Sony CMOS HD camera |
| Pixel | 2100,000 pixels |
| Image size(Horizontal×Vertical) | 1920×1080p |
| Scanning system | Progressive Scanning |
| Frame rate | (1920×1080)60p |
| SNR | ≥50dB |
| Video output | By "DVI, HDMI, CVBS" video output |
| Horizon resolution | 1080 lines |
| Light source | Built-in 80W LED cold light source |
| Monitor | 19/22/24 inch |
| Function | USB storage |

YKD-9115

FULL HD Endoscope System



FEATURES

- Built-in LED cold light source;
- Built-in USB Video recording function;
- The integrated design of LED cold light source and camera saves space and is convenient to carry;

Parameter configuration

| | |
|------------------|----------------------------|
| Model number | YKD-9115 |
| Image Sensor | 1/3" SONY CMOS |
| Effective Pixels | 1305x977 |
| Scanning System | Progressive |
| Resolution | 720p |
| S/N Ratio | ≥42dB |
| Monitor | 15 inch monitor |
| Color(AWB) | Auto / manual |
| Camera function | White balance and freezing |
| Light source | LED light source |
| Storage | USB |
| Video Recording | MP4 |

Portable light source

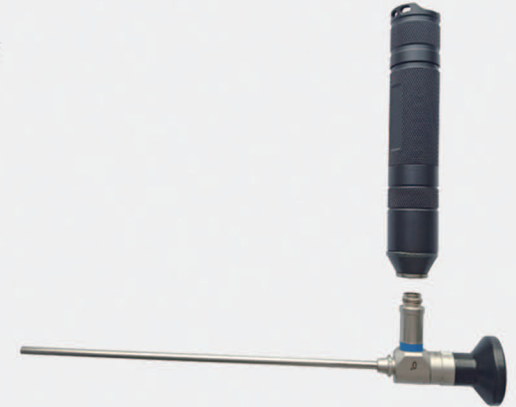


INSTALLATION

- RECHARGEABLE BATTERY



- EASY TO INSTALL



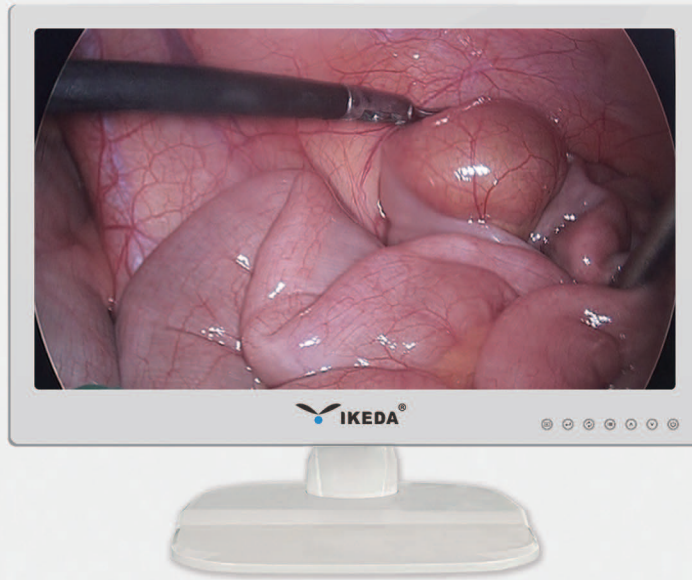
FEATURES

- Adopted imported medical LED, Strong stability, Good anti-seismic property.
- Colour temperature purity: Natural light 6500K, no stray lights.
- High brightness: great transparency, Excellent color rendering, great three dimensional sense of the surgery.

Parameter configuration

| | |
|----------------------|-----------------|
| DC power supply time | 5h |
| Charging time | 3h |
| Buib | 5-10w LED |
| Battery | Lithium battery |
| Color tempreture | 5500-6500k |
| Light Illumination | >200000 Lux |
| Net weight | 58.5g |
| Length | 132mm |
| Diameter | 24mm |

Medical Monitor



- High-performance I/P conversion
- Bright color separation deep compensation
- Environmentally friendly LED backlight
- Dynamic dark area color reconstruction technology
- Over Drive accelerates response and eliminates screen smear
- Digital image transient enhancement technology
- Unique white balance automatic adaptation technology
- Gamma value adjusted one by one before leaving the factory
- Personalized three primary color adjustment permissions
- Operate custom screen ratio adjustment between different modes

| Product Name | YKD-8024 | YKD-8032 |
|------------------------------------|--|-------------------------|
| Screen size | 24" | 32" |
| Appearance | White metal shell | |
| Power supply | External power supply 12V/8.5A | |
| Resolution | 1920x1080 | |
| Proportion | 16: 9 | |
| Factory brightness | 500±20% | 400 |
| Highest brightness | 600 | 400 |
| Contrast | 1000:1 | 1200:1 |
| Display color | 16.7M 6bit | 16.7M 8bit |
| Dot pitch | 0.2745x0.2745 | 121.25(H)xRGBx363.75(V) |
| Response time(ms) | 14ms | 8ms |
| Perspective | 178/178 | 178/178 |
| Dimensions(Without base) | 570(W)x345(H)x65(D)mm | 570(W)x345(H)x65(D)mm |
| Installation standard | VESA 100x100mm | VESA 200x100mm |
| Power consumption | 80W max | 100W max |
| Energy saving | EPA,VESA | |
| Operating temperature | 5°C~40°C | |
| MTBF | > 50,000 hours | |
| Signal interface | HDMI/DVI/VGA/CVBS/S-VIDEO | |
| Application | Endoscope/electronic gastrointestinal endoscopy, laparoscopy | |
| Factory curve | AMA2.6 | |
| Factory color temperature | 6500K | |
| Color gamut | 72% NTSC (sRGB) | |
| Brightness uniformity | >75% | |
| Brightness equalization technology | Brightness stabilization system | |
| Environmental light compensation | N/C | |
| Dot clock frequency | 154MHZ | 400MHZ |
| Scanning frequency | 50HZ-75HZ | 58HZ-97HZ |
| Backlight module | LED | LED |

YKD-2001

Medical trolley



Monitor stand



Lift button (lift range 10cm)



Bracket
(full injection-molded ABS material)



4 inch universal silent wheel



YKD-2002

Medical trolley



- Well combination and changeability, could be combined by option according to functional needs.
- Strong metal plate structure, make trolley firmer and more durable.
- Easy assembly, small packing volume, convenient to transport.
- The pallet height is adjustable.

